

<b>DOCUMENT TITLE</b>	<b>HD Writer AE2.1 Installation Guide</b>
-----------------------	---

<b>APPLICABLE MODELS</b>	<b>HDC-TM700, HDC-SD700, HDC-HS700, HDC-SD600</b>
--------------------------	---

This is a standard installation guide for the HD Writer AE2.1 software supplied with the above camcorders.

The software will work on Windows XP (32 bit)/Vista (32 bit)/ Windows 7 (32 and 64 bit). Please read your instruction manual for further operating system requirements.

To install and use the software you must have administrator rights on the computer.

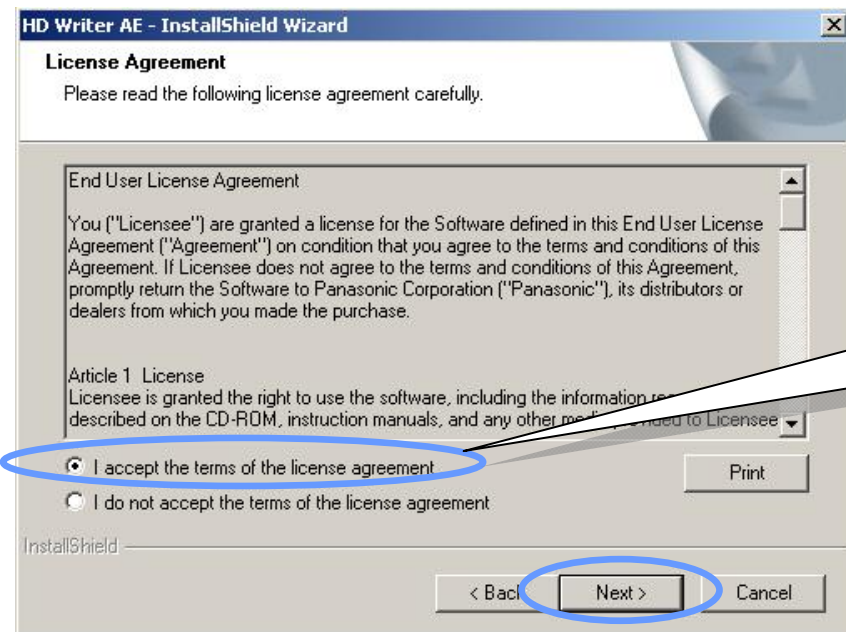
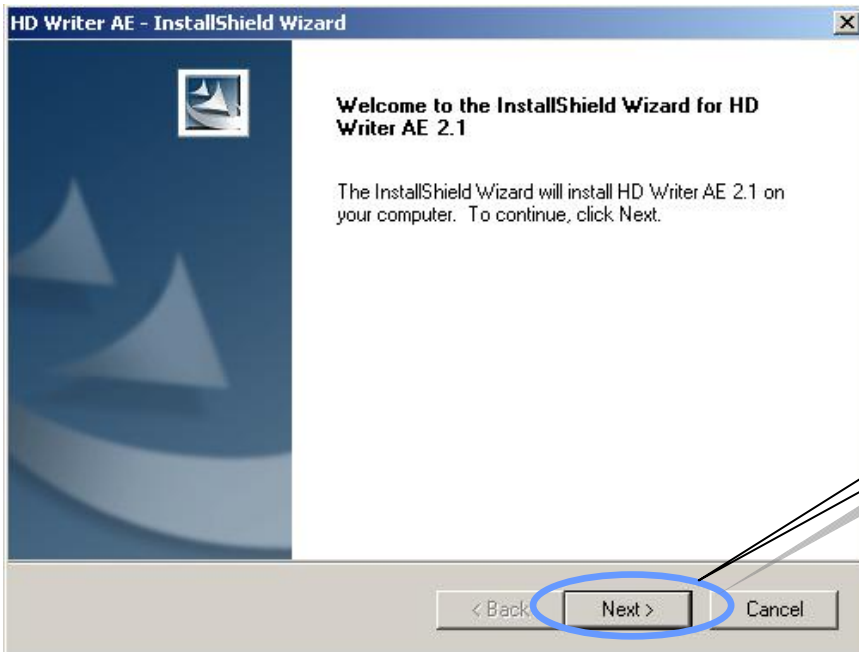
If the installation does not auto start please follow the guide at the end of this document to start the installation manually (page 6).

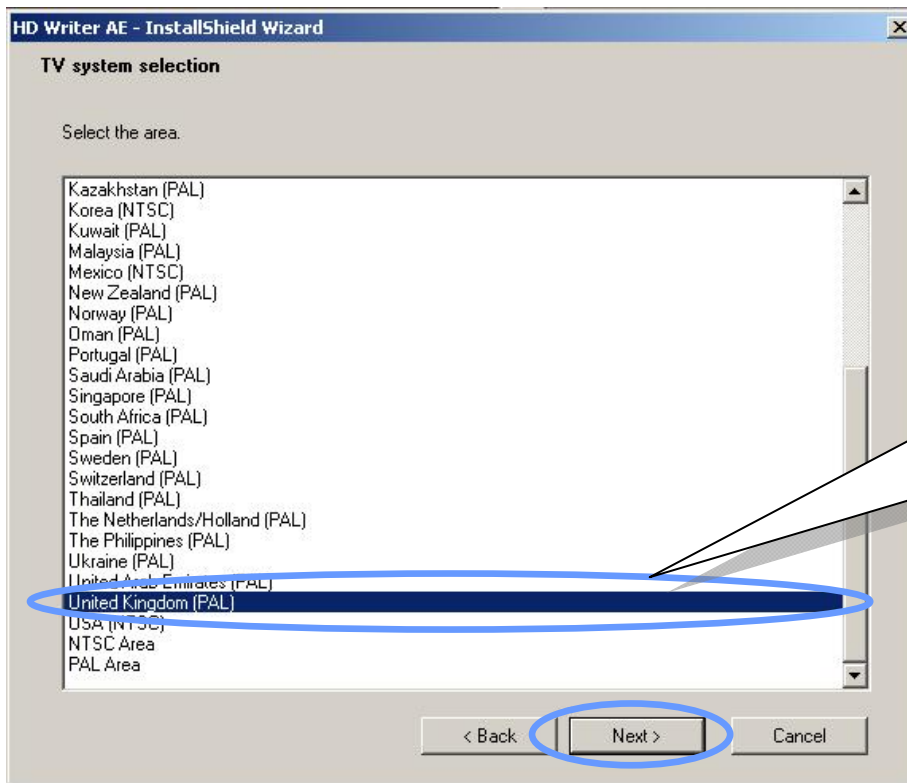
Insert the HD Writer AE2.1 disc into your computer CD/DVD drive.



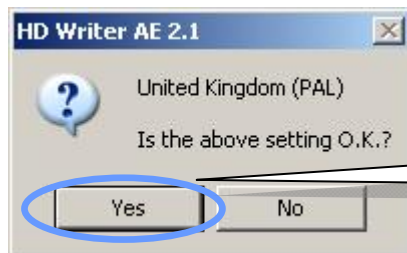
A splash screen will be shown as the InstallShield Wizard starts.

If a splash screen is not shown autorun is probably disabled on your computer. In this case please see the extra section at the end of the guide titled 'How to start the installation manually' (Page 6).

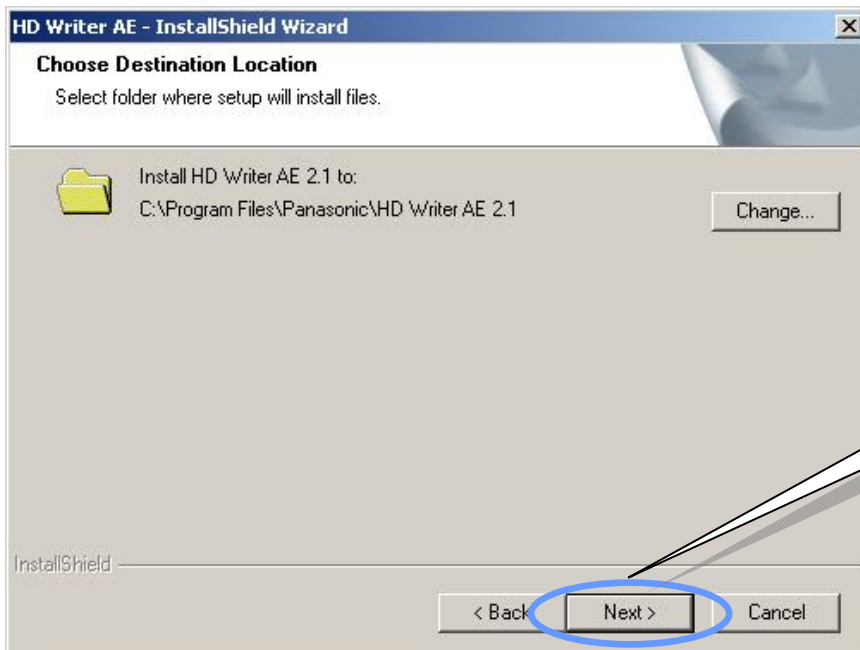




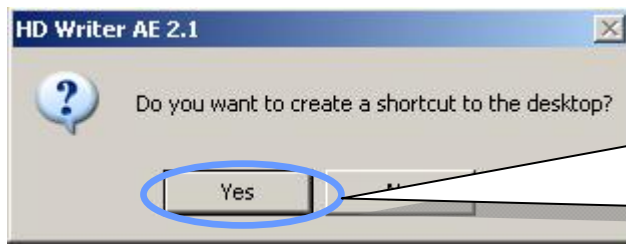
For a UK camcorder please ensure that the 'United Kingdom (PAL)' TV system is selected and click 'Next'.



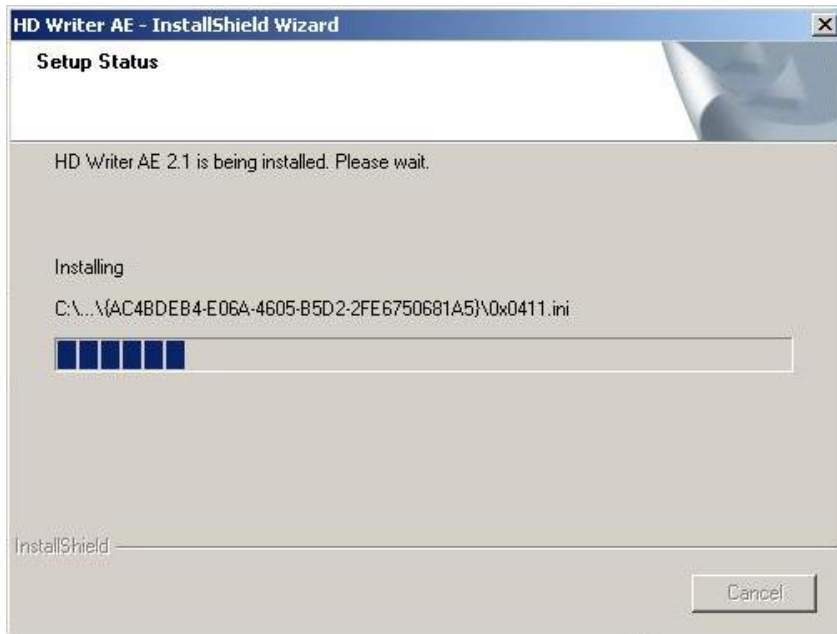
A confirmation box will be displayed showing the selected TV system. Click 'Yes'.



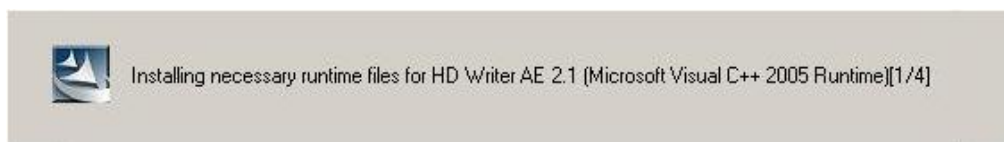
Please click 'Next' for a standard installation.



If you wish to have a shortcut to HD Writer AE2.1 on the desktop select 'Yes'. If you select 'No' you will be able to access HD Writer AE2.1 through Start ->Programs->Panasonic-> HD Writer AE2.1



The installation will now start.



Various messages such as this one will be shown and this is a normal part of the installation.



HD Writer AE2.1 will now evaluate the system for video playback.



If your computer will not be able to playback video at full frame rate a message similar to this will be shown giving the approximate frame rate. fps – frame per second.

**NOTE:**

The minimum system requirements are shown in the HD Writer AE2.1 manual.



Your computer must be restarted before you use the HD Writer AE2.1.

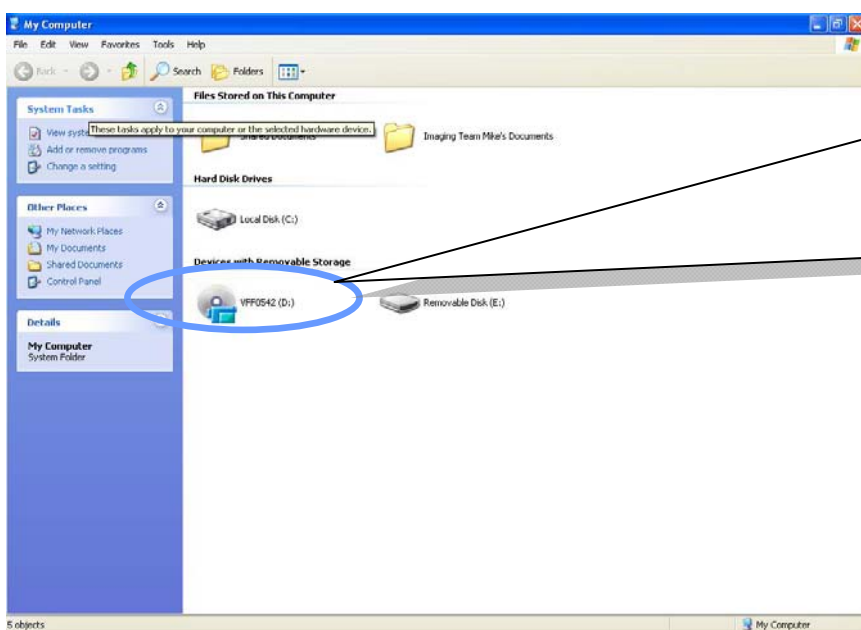
## How to start the software installation Manually



Double left click on the My Computer icon on the computer desktop



If the My Computer icon is not on the desktop it can be accessed through the start button.



The disc will be listed as the CD/DVD drive under 'Devices with Removable Storage'. The name may be shown as Panasonic / VFF\*\*\*\* or HD Writer AE2.1.

Double left click on the icon. This may start the autorun and start the installation.



