

# Panasonic

Digital Cordless Phone

Model No. **KX-TG7100E/KX-TG7102E**  
**KX-TG7103E**

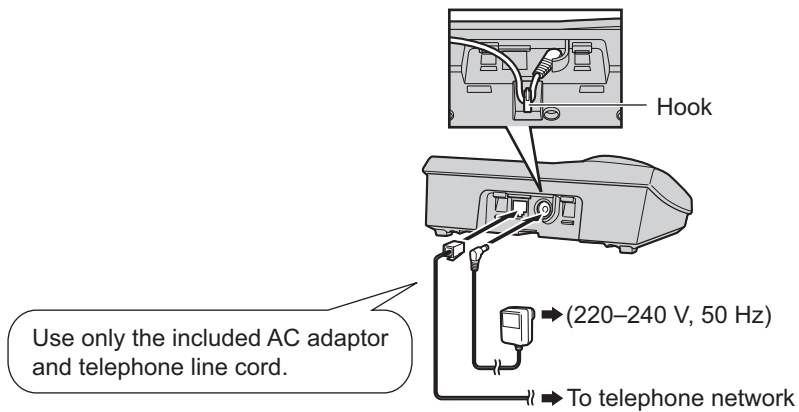
Digital Cordless Answering System

Model No. **KX-TG7120E/KX-TG7122E**  
**KX-TG7123E**

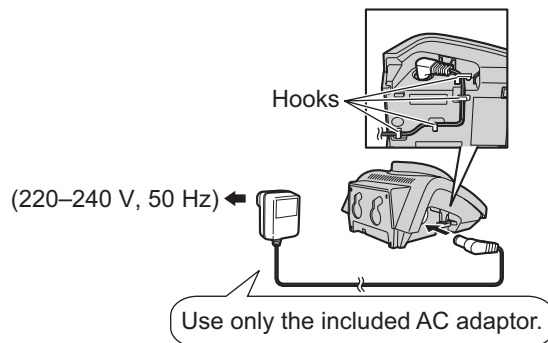
## Quick Guide

### 1 Connections

Base unit

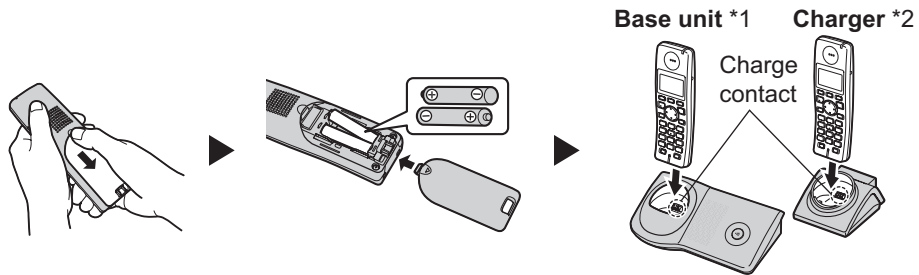


Charger (KX-TG7102, KX-TG7103, KX-TG7122, and KX-TG7123 only)



PQQW15103YA DC0206DS2076

## 2 Battery installation/ Battery charge (Initial charge: 7 hours)



\*1 The pictured model is KX-TG7100.  
\*2 KX-TG7102, KX-TG7103,  
KX-TG7122, and KX-TG7123 only

### Note:

- Use only the included rechargeable batteries.

## 3 Symbols used in these operating instructions

| Symbol | Meaning   |
|--------|---|
| [/OK]  | Press [/OK].  |
| →      | Proceed to the next operation.  |
| “ ”    | Select the words in quotations shown on the display (e.g., “Handset setup”) by pressing [] or []. |

### Date and time

1 [/OK]

2 Press [] or [] to select “Handset Setup”. → []

3 KX-TG7100/KX-TG7102/KX-TG7103

Press [] or [] to select “Set Date & Time”. → []

KX-TG7120/KX-TG7122/KX-TG7123

Press [] or [] to select “Time Settings”. → [] → Press [] or [] to select “Set Date & Time”. → []

4 Enter the current day, month, and year.

5 Enter the current hour and minute.

6 [/OK] → []

## 4 Basic operations



| Feature  | Operation  |
|--|--|
| Making a call  | Dial the phone number. → [📞]/[📞]   |
| Answering a call   | [📞]  |
| Hanging up   | [📞]  |
| Receiver/speaker volume                                      | Press [▲] or [▼] while on a call.  |
| Last number redial   | [📞] → [📞]  |
| Making a call with redial list                               | [📞] → Press [▲] or [▼] to select the desired number. → [📞]   |
| Handset phonebook: storing an entry (name and phone numbers) | [📞] → [📞/OK] → "New Entry" → [▶] → Enter the party's name (16 characters max.). → [📞/OK] → Enter the party's phone number (24 digits max.). → [📞/OK] → "save" → [▶] → [📞]<br>• To enter a name, see the character table in the operating instructions. |
| Handset phonebook: making a call                             | [📞] → Press [▲] or [▼] to display the desired entry. → [📞]   |
| Handset ringer volume  | [📞/OK] → "Handset Setup" → [▶] → "Ringer Setup" → [▶] → "Ringer Volume" → [▶] → Press [▲] or [▼] to select the desired volume. → [▶] → [📞]   |
| Changing ringtone (outside calls)                            | [📞/OK] → "Handset Setup" → [▶] → "Ringer Setup" → [▶] → "Ext. Ringtone" → [▶] → Select the desired ringtone. → [▶] → [📞]   |

### Answering system (KX-TG7120, KX-TG7122, and KX-TG7123 only)

| Feature               | Operation   |
|-----------------------|---|
| Answering on/off      | [📞/OK] → "Answer System" → [▶] → "Answer On" or "Answer Off" → [▶] → [📞]  |
| Listening to messages | [📞/OK] → "Answer System" → [▶] → "Play New Msg." or "Play All Msg." → [▶] |

## 5 Frequently asked questions

| Question   | Cause & solution  |
|--|---|
| What kind of power outlet should I connect the AC adaptor to?              | Connect the AC adaptor to a 220–240 V outlet.   |
| Why is $\nabla$ flashing?  | <ul style="list-style-type: none"> <li>• The handset is too far from the base unit. Move closer.</li> <li>• The AC adaptor is not connected. Check the connections.</li> <li>• You are using the handset or base unit in an area with high electrical interference. Place the handset and base unit away from interference sources, such as antennas and mobile phones.</li> <li>• The handset is not registered to the base unit. Register it.<br/> <b>[OK]</b> → “Handset Setup” → <b>[▶]</b> → “Registration” → <b>[▶]</b> → “Register H.set” → <b>[▶]</b> → Press and hold <b>[M]</b> on the base unit for about 3 seconds, until the registration tone sounds. → Wait until “Enter Base PIN” is displayed. → Enter the base unit PIN (default: “0000”). → <b>[OK]</b></li> </ul> |
| Why is the handset display blank?  | The handset is not turned on. To turn the power on, press <b>[*0]</b> for about 1 second.   |
| What should I do when the handset does not turn on?                        | <ul style="list-style-type: none"> <li>• Make sure that the batteries are installed correctly.</li> <li>• Fully charge the batteries.</li> <li>• Clean the charge contacts and charge again.</li> </ul>   |
| How long should I charge new batteries?                                    | Charge the batteries for about 7 hours.   |
| How long is the battery operating time?                                    | <p>When you are using fully-charged Ni-MH batteries (included batteries);</p> <p>In continuous use: 17 hours max.<br/>                     In continuous standby mode: 180 hours max.</p> <ul style="list-style-type: none"> <li>• It is normal for batteries not to reach full capacity at the initial charge. Maximum battery performance is reached after a few complete cycles of charge/discharge (use).</li> <li>• Actual battery performance depends on a combination of how often the handset is in use and how often it is not in use (standby).</li> </ul>  |
| Can I keep the handset on the base unit or charger when I am not using it? | <ul style="list-style-type: none"> <li>• Even after the handset is fully charged, the handset can be left on the base unit or charger without any ill effect on the batteries.</li> </ul>   |

| Question  | Cause & solution  |
|---|---|
| When should I replace the batteries?                | If the batteries are fully charged until  is displayed, but  is displayed after a few calls, replace the batteries with new ones.                         |
| What is a PIN?                                      | The PIN is a 4-digit number that must be entered in order to change certain base unit settings. The default PIN is "0000".  |
| What do I need to do to display caller information? | <ul style="list-style-type: none"> <li>• You need to subscribe to Caller ID service. Consult your service provider/telephone company for details.</li> <li>• The message "You must first subscribe to Caller ID." will be displayed until you receive caller information after subscribing to Caller ID service.</li> </ul> |

## 6 Optional service (Caller ID)

If you subscribe to Caller ID service, you can:



– display caller information

## 7 Sales and support information

### Customer Care Centre

- For customers within the UK: 08700 100 076
- For customers within the Republic of Ireland: 01289 8333
- Visit our website for product information: [www.panasonic.co.uk](http://www.panasonic.co.uk)
- E-mail: [customer.care@panasonic.co.uk](mailto:customer.care@panasonic.co.uk)

### Direct Sales at Panasonic UK

- Order accessory and consumable items for your product with ease and confidence by phoning our Customer Care Centre Monday - Thursday 9:00am - 5:30pm, Friday 9:30am - 5:30pm (Excluding public holidays).
- Or go on line through our Internet Accessory ordering application at [www.panasonic.co.uk](http://www.panasonic.co.uk)
- Most major credit and debit cards accepted.
- All enquiries transactions and distribution facilities are provided directly by Panasonic UK Ltd.
- It couldn't be simpler!
- Also available through our Internet is direct shopping for a wide range of finished products, take a browse on our website for further details.

**Customer Care Helpline Tel. No.: U.K. 08700 100 076 / R.O.I. 01289 8333**

# **IMPORTANT**

**If you have problems setting up or  
operating this product please call  
the Panasonic DECT Helpline  
08700 100 076 (UK)  
01289 83333 (Repl of Ireland)**