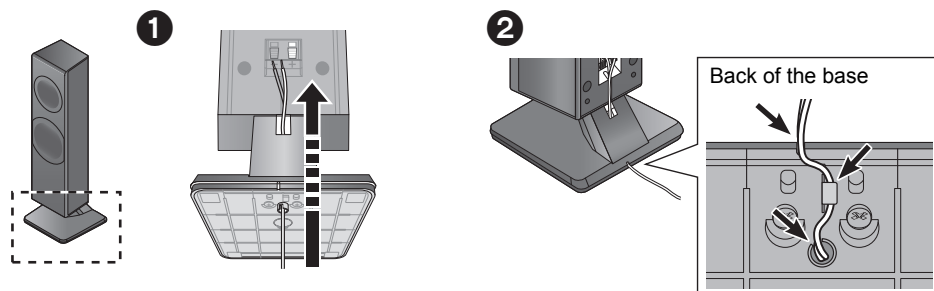


Easy Setting Guide

Blu-ray Disc™ Home Theater Sound System

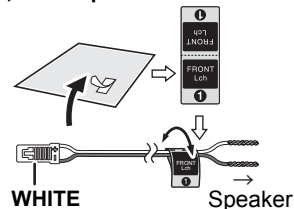
Model No. **SC-BTT590**

STEP 1: Assembling the front and surround speakers



STEP 2: Attaching the sticker to the speaker cables

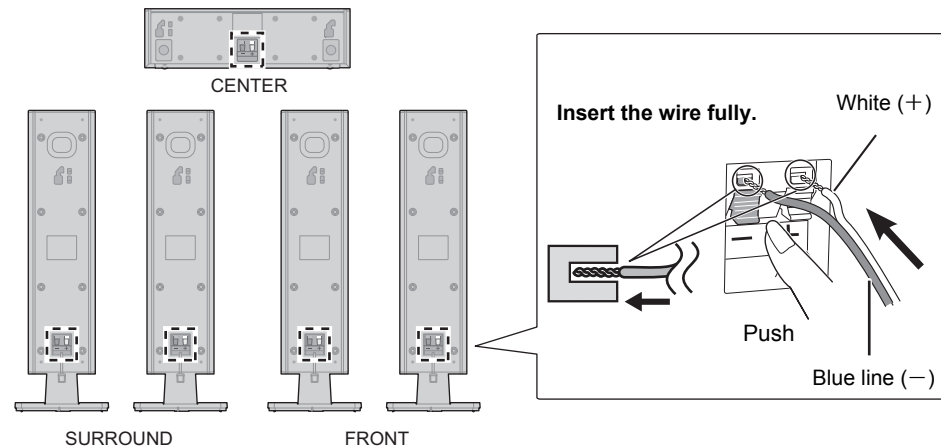
e.g., Front speaker Lch



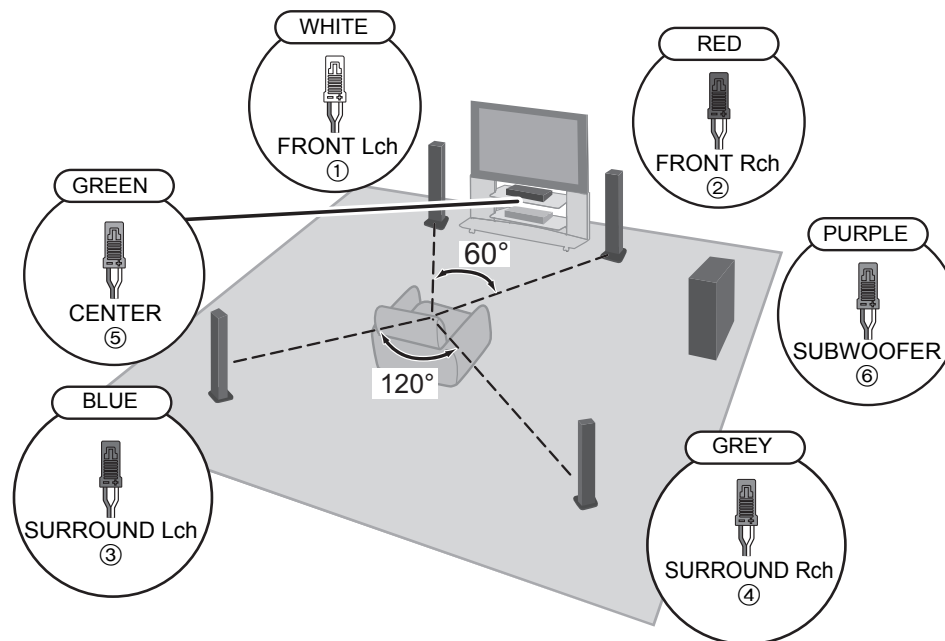
Speaker cable sticker	Connector
FRONT Lch ①	WHITE
FRONT Rch ②	RED
SURROUND Lch ③	BLUE
SURROUND Rch ④	GREY
CENTER ⑤	GREEN
SUBWOOFER ⑥	PURPLE

STEP 3: Connecting the speaker cables

Front and Surround speakers have no difference between right and left.



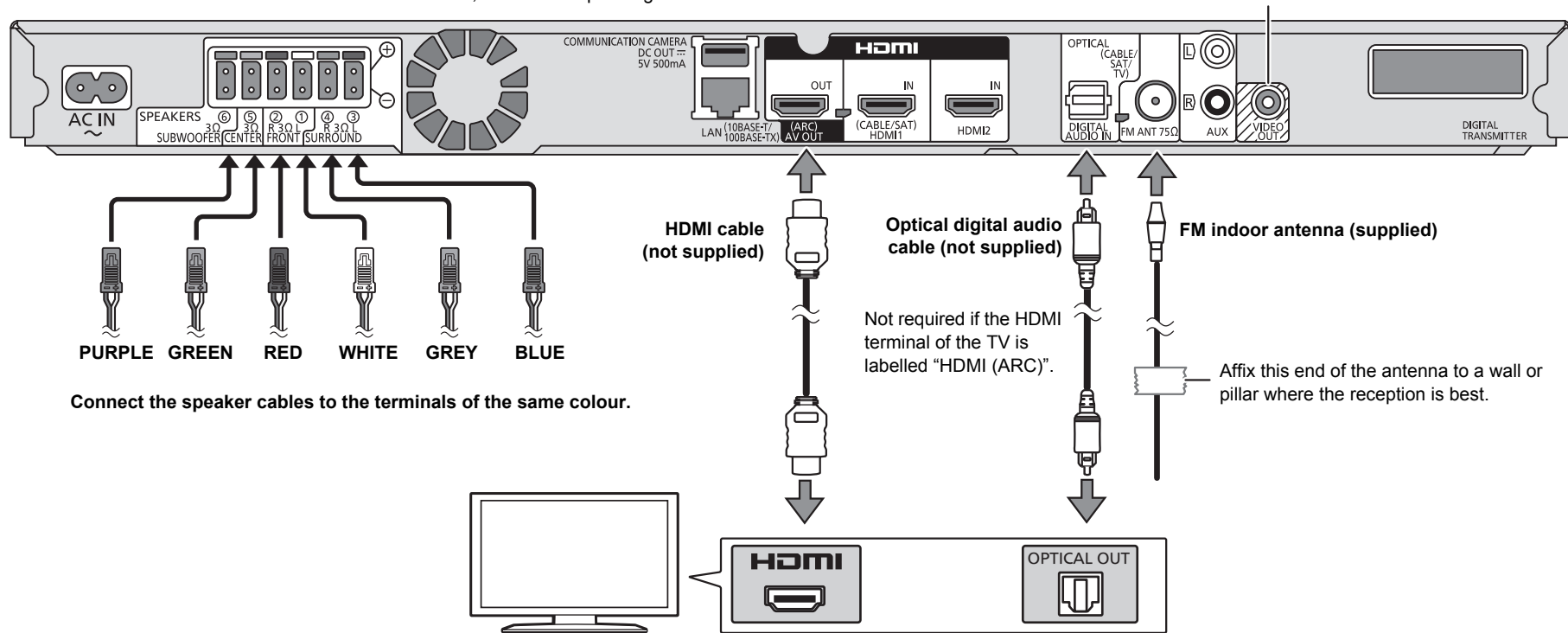
STEP 4: Placing the speakers



STEP 5: Connecting the cables

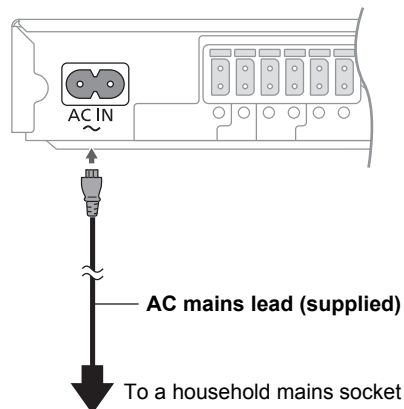
For information on other connection methods and the internet features, refer to the operating instructions.

A video cable (not supplied) is required to view photos/videos on the iPod/iPhone.

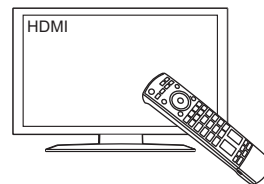


STEP 6: Turning on the system

1 Connect the AC mains lead.

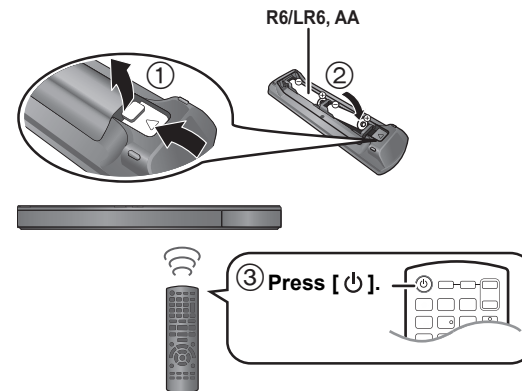


2 Turn on the TV.



Set the video input mode to HDMI, etc.

3 Turn on the system.



4 The Easy Setting starts.

Follow on-screen instructions.