

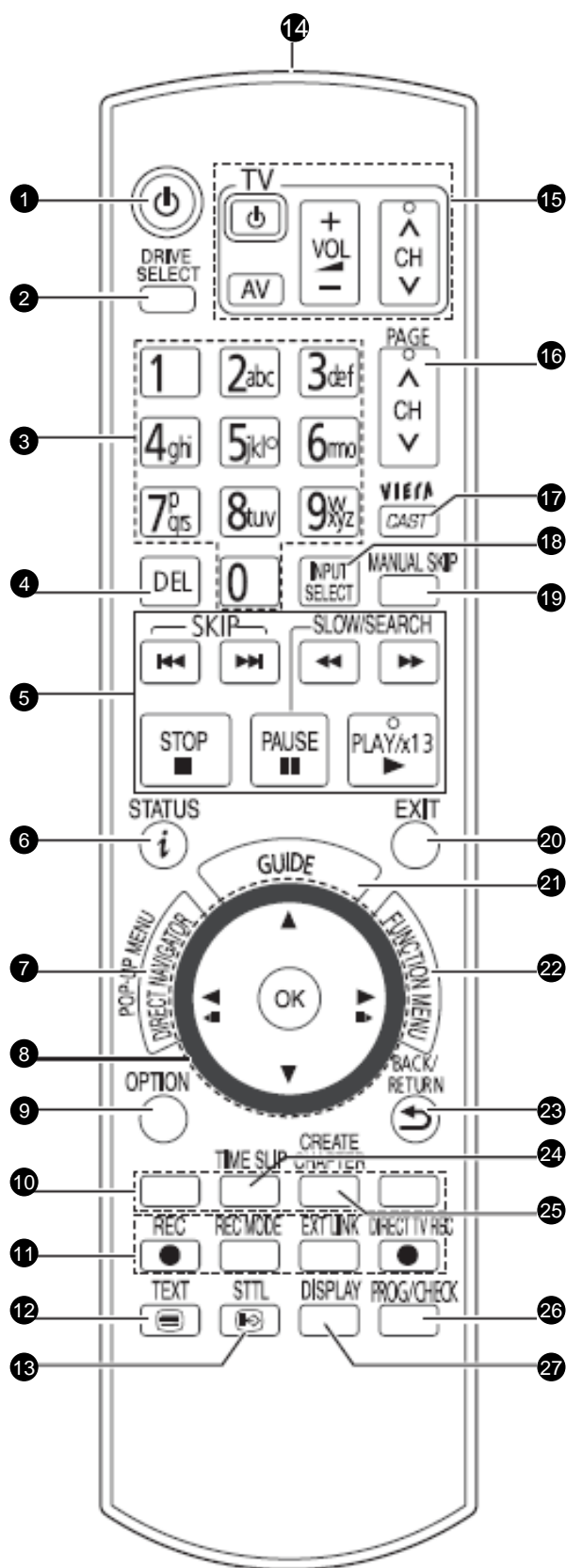
Panasonic Self Help Guides

Blu-ray HD Recorders Parental Control



DMR-BS850, DMR-BS750, DMR-BW780, DMR-BW880,
DMR-BS780, DMR-BS880 (Blu-ray and DVD Recorders)
DMR-XS350, DMR-XS380, DMR-XW380 (DVD Recorder)

What are the buttons on the remote control?




1. STANDBY: turn the recorder on/off
2. DRIVE SELECT: select BD/HDD/SD drive
3. Numbers: select channels or title numbers
4. DELETE
5. Recording and Play operations
6. Status
7. DIRECT NAVIGATOR / Top Menu
8. Selection Arrows / OK
9. OPTION Menu
10. Colour buttons:
RED – GREEN – YELLOW – BLUE
11. Recording:
REC: start recording
REC MODE: change recording mode (DR/HG/HX/XP/SP/etc.)
EXT LINK: activate external link
DIRECT TV RECORD
12. TELETEXT
13. SUBTITLES on/off
14. Remote Control Sensor
15. Buttons for controlling a TV
16. Channel Select
17. Start VIERA CAST
18. INPUT SELECT: select AV1, AV2, freesat, etc.
19. Skip approx. 1 minute forward (during playback)
20. EXIT the menu screen
21. GUIDE: Show the TV Guide
22. Access the FUNCTION MENU
23. RETURN to previous screen (in menus)
24. TIME SLIP: to specify an amount of time to skip ahead (during playback)
25. CREATE CHAPTERS (during playback)
26. PROG/CHECK: Show timer recording list
27. DISPLAY: Show menu for playback options

How do I create my own password protection on programmes recorded during the Watershed?

Parental Control

Parental control (when active) prevents programmes recorded after 9.00 PM and before 5.30 AM from being played without first inputting a 4-digit PIN number. The programmes recorded during the Watershed may have adult material unsuitable for younger children. If no user Pin code has been set, the user still will need to enter the default code of '0000' if any recordings are made during this time.

Programmes containing parental control flags will be indicated in the Direct Navigator with  .

Select

Press

Menu Display

(example)

Function Menu



DIGA Function Menu
Playback
Recording
Delete
Copy
TV Guide
Others



Others



Ext Link Standby
Flexible Recording via AV input
DV Automatic Recording
Network
BD / DVD Management
Setup



Setup

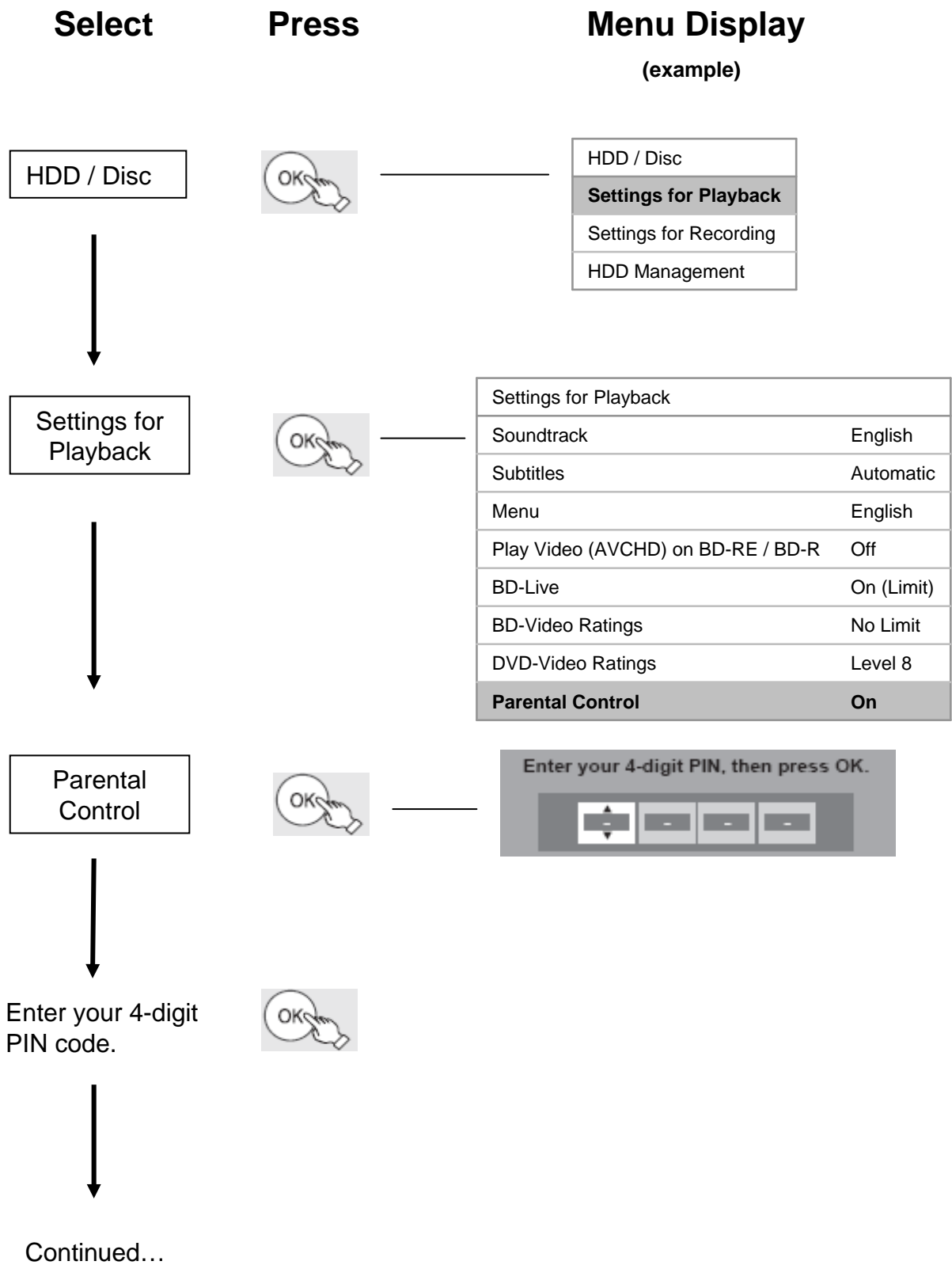


Setup
Tuning
HDD / Disc
Picture
Sound
Display
Connection
Network Settings
Others



Continued...

Parental Control, Continued...



Parental Control, Continued... (Actual Screen shots.)

Select

Press

Menu Display

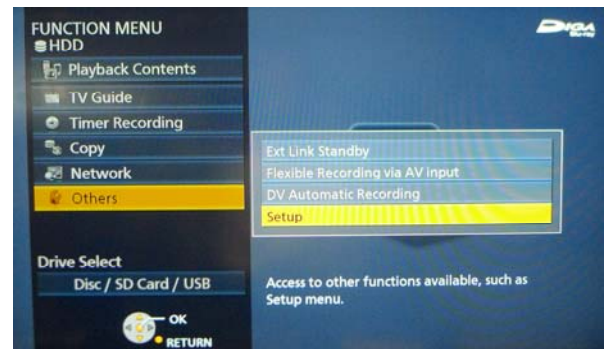
Function Menu



Others



Setup



Others



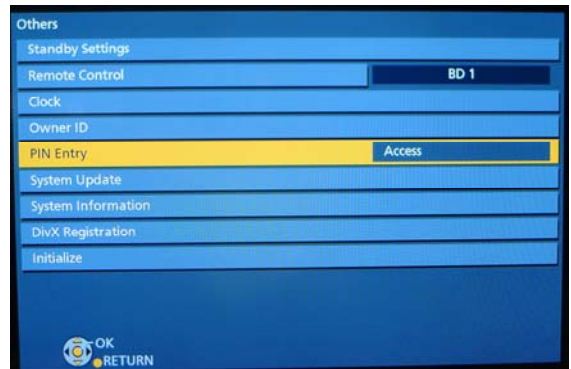
Parental Control, Continued...

Select

Press

Menu Display

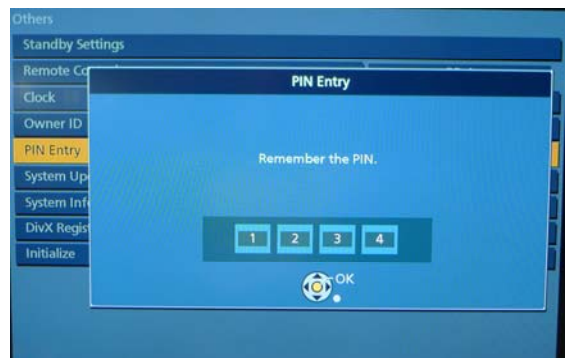
PIN Entry



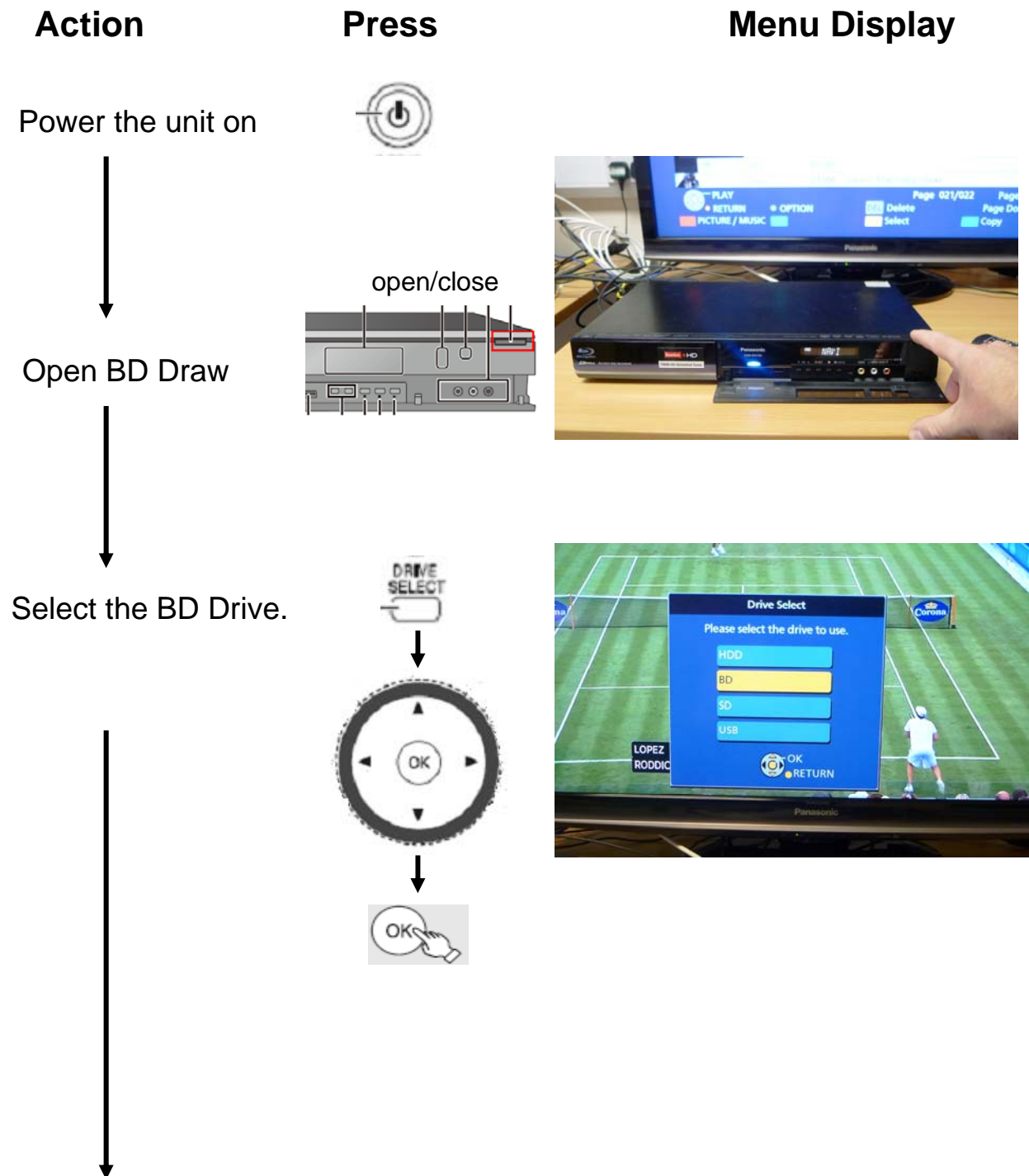
Enter your 4-digit PIN code.

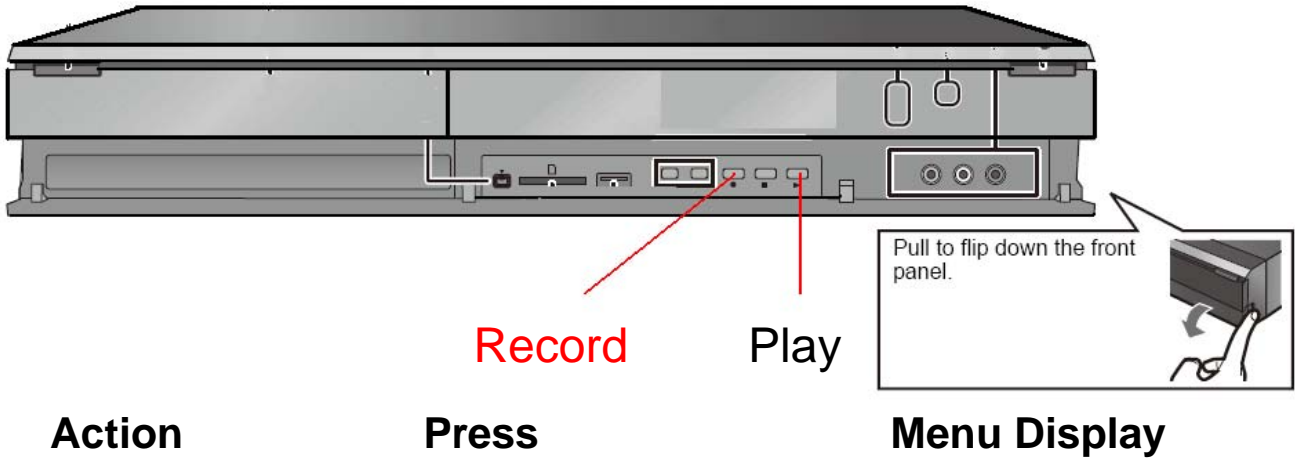


Remember your new PIN Code



How do I reset the PIN Code, if I have forgotten what I have set?





Press at the same
Time

Rec & Play



↓

Hold buttons for 5 seconds until
Display shows 'INIT'.



Confirm that the front display shows 'INIT'.
The Parental PIN Code has now been reset to
the default code of '0000'.