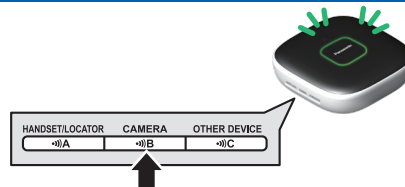
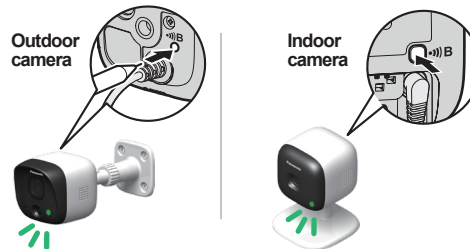


Guide for registering a camera to the hub

- 1 Press and hold [CAMERA] on the hub until the LED blinks in green.



- 2 Press and hold [CAMERA] on the back of the camera until the LED blinks in green.



- 3 Wait for the hub to sound one long beep.

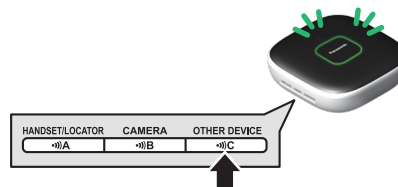


PNQW4532ZA CC0415WK0

Guide for registering a sensor or smart plug to the hub

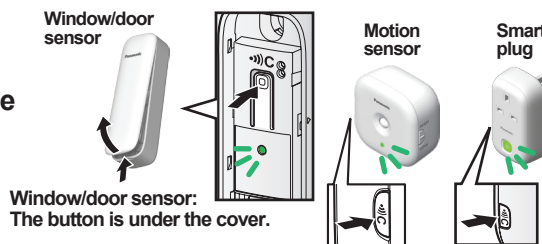
1

Press and hold [ OTHER DEVICE] on the hub until the LED blinks in green.



2

Press and hold [ C] until the LED blinks in green.



3

Wait for the hub to sound one long beep.

