

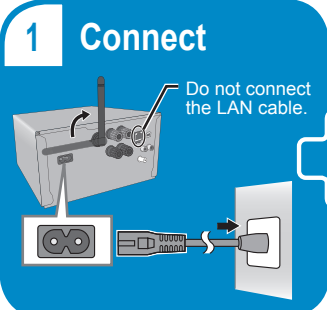
Panasonic

Wi-Fi® QUICK SETUP GUIDE

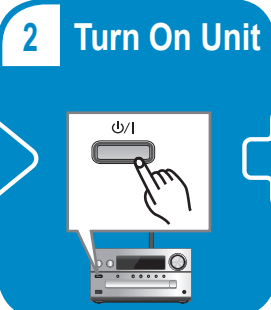
CD Stereo System Model No. SC-PMX100/SC-PMX100B

Thank you for purchasing this product. Please read these instructions carefully before using this product, and save this manual for future use.

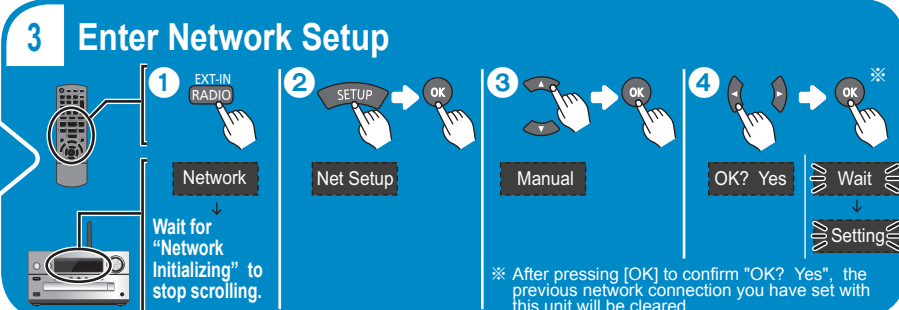
1 Connect



2 Turn On Unit



3 Enter Network Setup

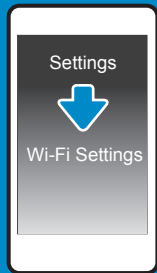


1 EXT-IN RADIO → Network
2 SETUP → OK → Net Setup
3 Manual → OK
4 OK? Yes → Wait → Setting

※ After pressing [OK] to confirm "OK? Yes", the previous network connection you have set with this unit will be cleared.

4 Configure with Smartphone/Tablet

Go to wireless settings on your smartphone or tablet.



Select

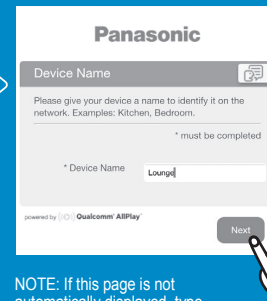
"PMX100 [] [] [] [] [] []_AJ" ※

※ This can sometimes take 1 minute to appear.



NOTE:
• If this operation does not work correctly, please repeat it several times.
• iOS:
If "Panasonic PMX100 [] [] [] [] [] []" appears under "SET UP NEW AIRPLAY SPEAKER..." instead, select it to enter "AirPlay Setup" screen. Then, select "Next" to complete the configuration.

Name your device e.g. Kitchen, Lounge or whatever you would like it to appear.



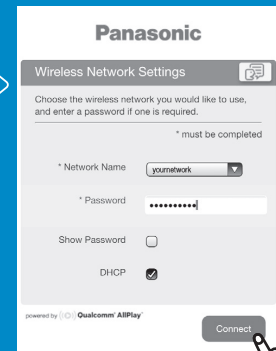
NOTE: If this page is not automatically displayed, type "http://172.19.42.1/" into your internet browser URL address field.

Select your security options for your unit.

Select "Yes" to set a password so that the next time this network setting method is used, it will verify user by this password. Refer to the Operating Instructions for details.

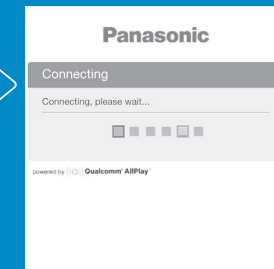


Select your network. (enter password if needed)



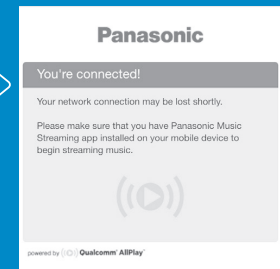
NOTE: If you encounter an error message asking you to reconfigure your router to WPA2™ security, please refer to your router's manual or contact your service provider for instructions on how to do this.

Wait a few seconds and...



...you're connected! ※

※ After a short wait, your smartphone/tablet should be automatically reconnected to your Wi-Fi network. In case you are not reconnected automatically, please re-select your Wi-Fi network from the settings / Wi-Fi settings menu on your device.



"W" lights up solid.

5 Download App

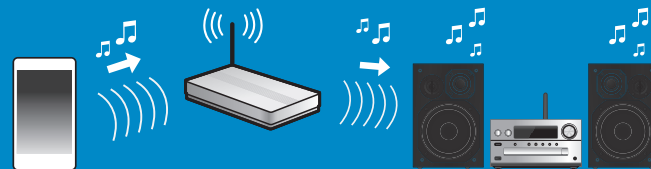
Download the free "Panasonic Music Streaming" app

iOS : App Store

Android : Google Play™



6 Stream your music



For details on the app, refer to the site below. (These sites are in English only.)

iOS : http://panasonic.jp/support/global/cs/audio/app/music_streaming/ios/

Android : http://panasonic.jp/support/global/cs/audio/app/music_streaming/android/

Further Support

For more information and other network setting methods, refer to the Operating Instructions. If you require further help, please visit <http://panasonic.jp/support/global/cs/audio/> (This site is in English only.)



The Wi-Fi CERTIFIED™ Logo is a certification mark of Wi-Fi Alliance®. The Wi-Fi Protected Setup™ Identifier mark is a certification mark of Wi-Fi Alliance®. "Wi-Fi" is a registered trademark of Wi-Fi Alliance®. "Wi-Fi Protected Setup™", "WPA™", and "WPA2™" are trademarks of Wi-Fi Alliance®. Google Play and Android are trademarks of Google Inc. App Store is a service mark of Apple Inc. All other trademarks are trademarks of their respective owners.