

Dismantling and basic repair information

Easy Use Mobile Phone

Model No. **KX-TU446EX**

B; Black Version
G; Grey Version
R; Wine Red Version
1; Red Version

[Only applicable for suffix E and above]



KX-TU446
(Handset)


Configuration for each model

Model No	Base Unit	Handset	Charger Unit	Expandable
KX-TU446		1 (TU446)		

 **WARNING**

This service information is designed for experienced repair technicians only and is not designed for use by the general public. It does not contain warnings or cautions to advise non-technical individuals of potential dangers in attempting to service a product. Products powered by electricity should be serviced or repaired only by experienced professional technicians. Any attempt to service or repair the product or products dealt with in this service information by anyone else could result in serious injury or death.

IMPORTANT SAFETY NOTICE

There are special components used in this equipment which are important for safety. These parts are marked by  in the Schematic Diagrams, Circuit Board Diagrams, Exploded Views and Replacement Parts List. It is essential that these critical parts should be replaced with manufacturer's specified parts to prevent shock, fire or other hazards. Do not modify the original design without permission of manufacturer.

IMPORTANT INFORMATION ABOUT LEAD FREE, (PbF), SOLDERING

If lead free solder was used in the manufacture of this product, the printed circuit boards will be marked PbF. Standard leaded, (Pb), solder can be used as usual on boards without the PbF mark. When this mark does appear, please read and follow the special instructions described in this manual on the use of PbF and how it might be permissible to use Pb solder during service and repair work.

- When you note the serial number, write down all 11 digits. The serial number may be found on the bottom of the unit.
- The illustrations in this Service Manual may vary slightly from the actual product.

1 Warning

1.1 Battery Caution







Risk of explosion if battery is replaced by an incorrect type.

Dispose of used batteries according to the instructions.

2 Disassembly and Assembly Instructions

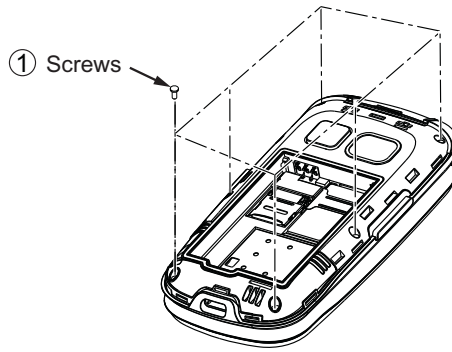
Note:

Tools list used for disassembly the mobile phone.

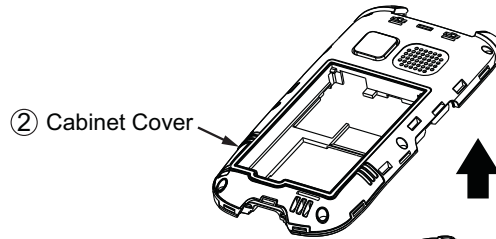
Tool	Tool picture only for reference
Phillips screwdriver	<p data-bbox="539 353 836 389">+ Tip of the screwdriver</p> 
Tweezer	
Electric soldering iron	
Disassembly sheet	
Suction cup or Hot melt glue stick	<div style="display: flex; justify-content: space-around;">   </div> <p data-bbox="539 1608 1091 1666">Remark: If use suction cup, the dimension should small than the LCD panel lens width.</p>

2.1 Disassembly Instructions (Handset (Main P.C. board))

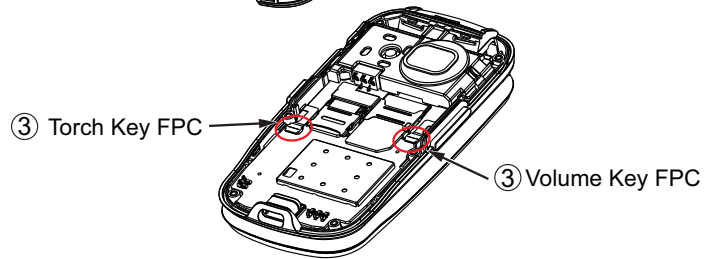
- ① Take out the Battery Cover and remove the 6 Screws.



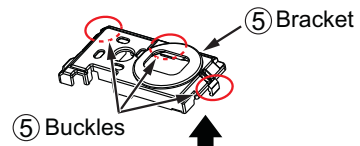
- ② Remove the Cabinet Cover.



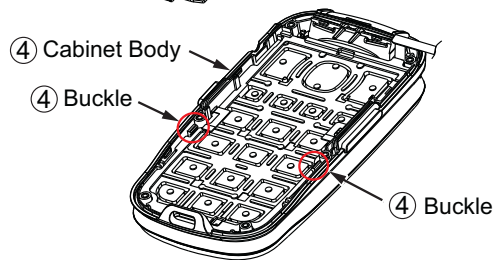
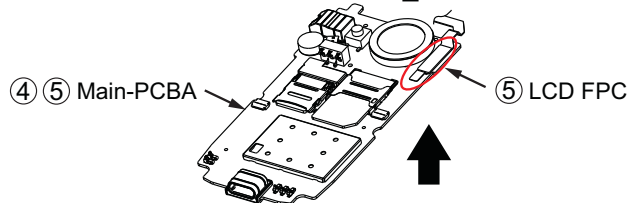
- ③ Unlock the Torch Key and Volume Key FPC.



- ④ Unlock the buckles of the Cabinet Body to take out the Main-PCBA.



- ⑤ At the same time, unlock the buckles of the Bracket Module, take out the LCD FPC and remove the Main-PCBA smoothly.



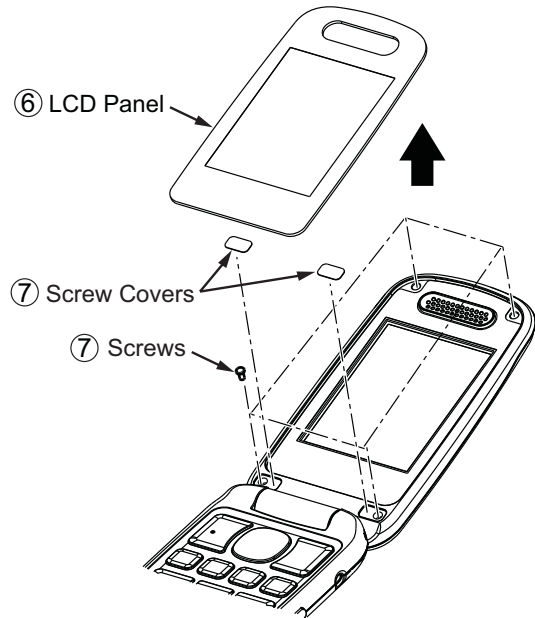
- ⑥ Pull up the LCD Panel Lens from the Hinge Assembly module.

*Note:

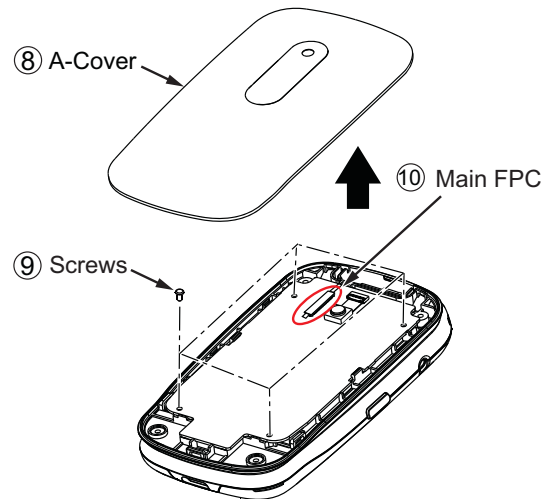
You can use suction cup or hot melt glue stick and disassembly sheet to help.



- ⑦ Take out the Screw Cover.
Then, remove 4 Screws.

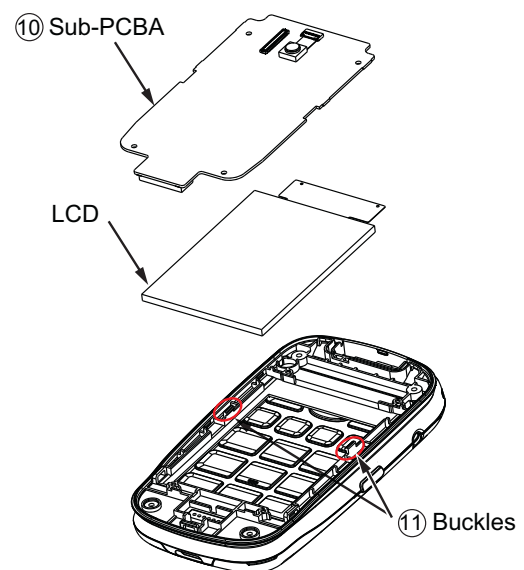


- ⑧ Flip and separate the A-Cover module part.



- ⑨ Remove the 4 Screws.

- ⑩ Remove the Main FPC from the Sub-PCBA slot.



- ⑪ Unlock Buckles of the Bracket to remove the Sub-PCBA.

2.2 How to replace the Handset LCD

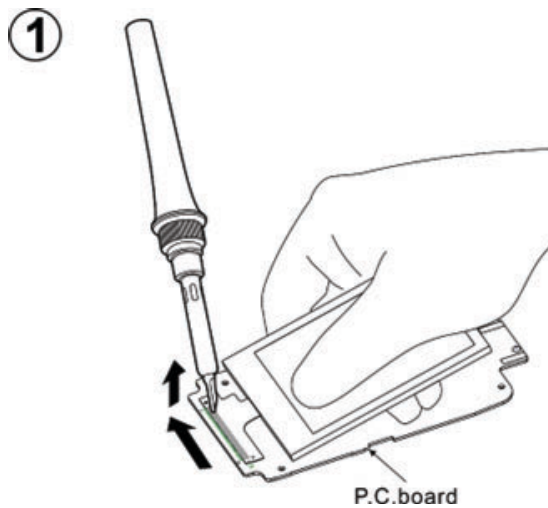
Notes:

The illustrations are simplified in this page.
They may differ from the actual product.

- ① Remove the LCD: use soldering iron to solder the FPC pins of LCD, and peel off the FPC pin of LCD from the P.C. board, in the direction of the arrow.

Note:

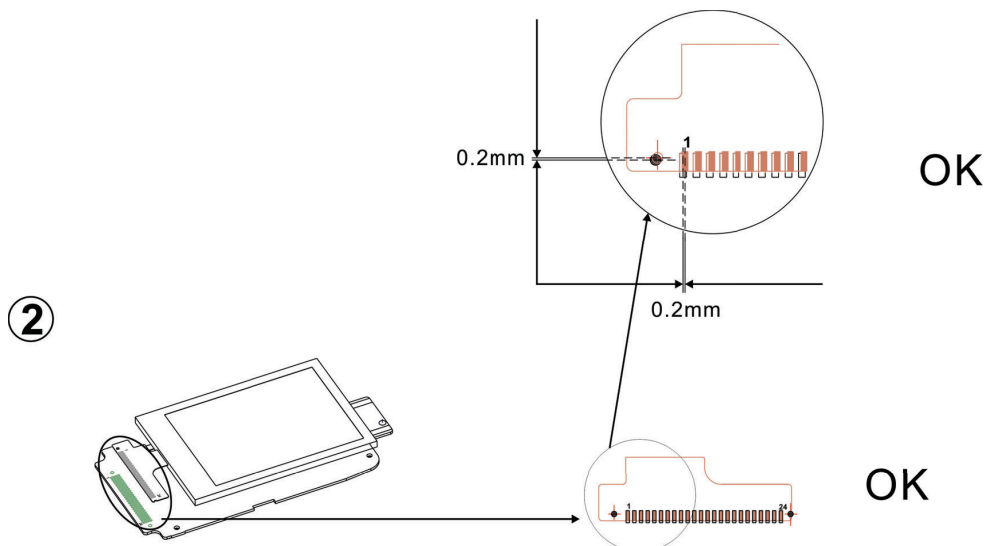
The soldering iron temperature should be controlled in 360 ± 10 °C about 3 to 5 seconds.
Take care to ensure that the foil on the P.C. board is not damaged.



- ② Fit a new LCD: tear off the double-sided adhesive release paper from the new LCD, then fixing the LCD FPC on the P.C. board.

Note:

If interval tolerance between center lines is less than 0.2 mm, it is ok.

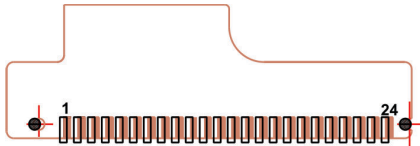
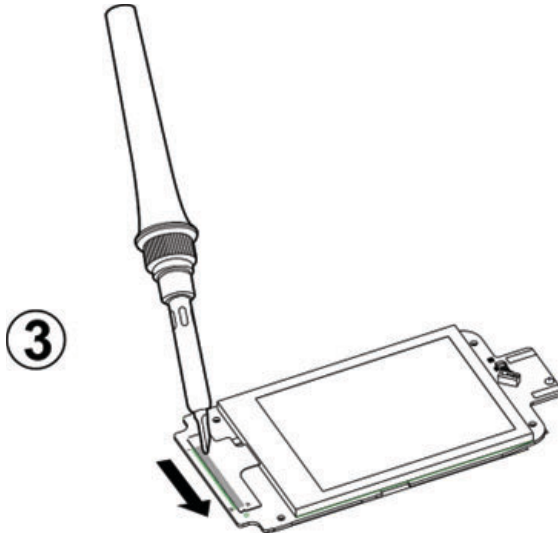


③ Use soldering iron to solder the FPC pins of LCD, in the direction of the arrow.

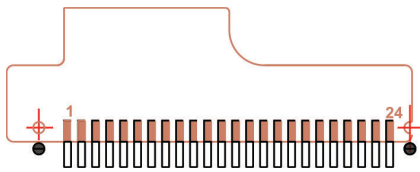
Note:

The soldering iron temperature should be controlled in 360 ± 10 °C about 3 to 5 seconds.

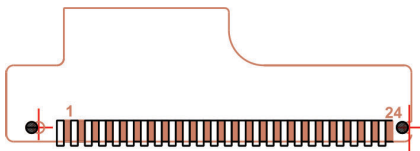
Check each FPC pin should good soldered to the P.C. board.



NG



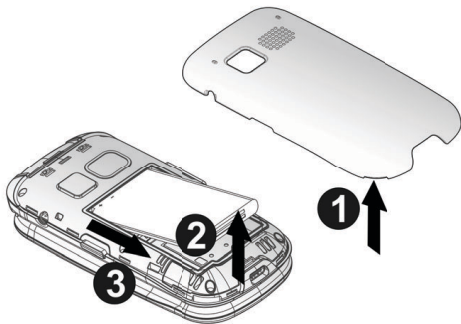
NG



NG

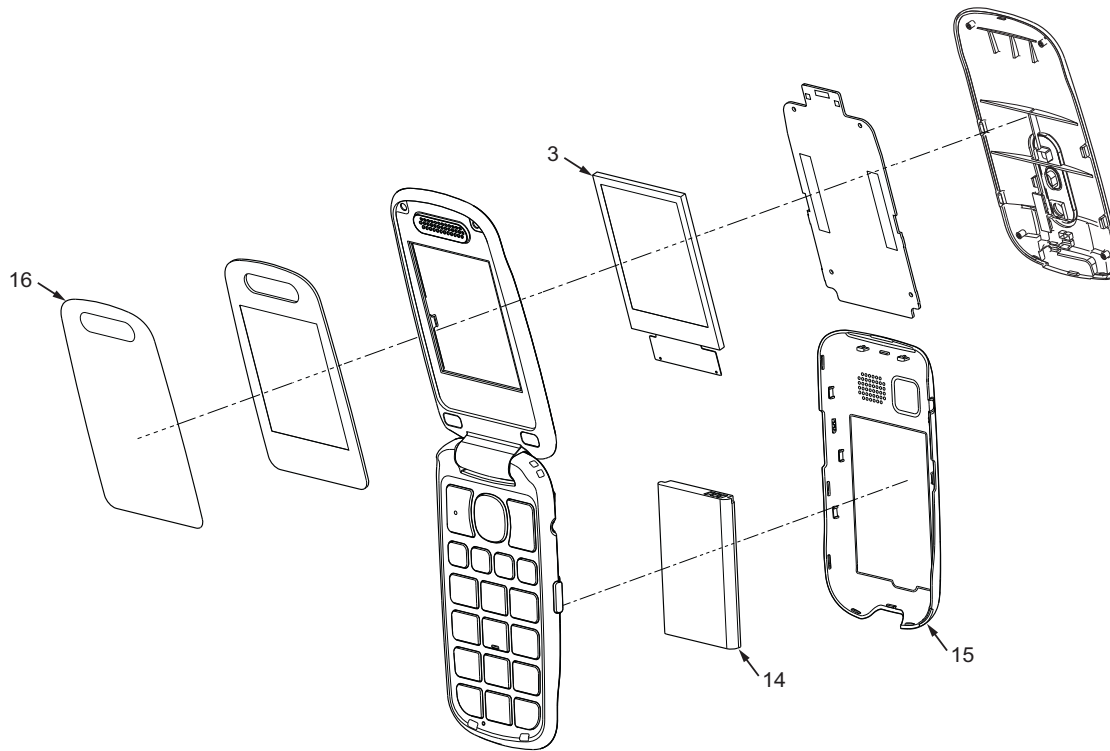
2.3 How to replace the Battery and Battery cover

Remove the phone's cover ①, and lift the battery ②, then remove it ③.



3 Exploded View and Replacement Parts List

3.1 Exploded View



3.2 Replacement Parts List

Safety	Ref.No.	Part No.	Part Name & Description	Remarks
	3	PNWYA446EX03	LCD (with LCD conductive sticker)	
	14	PNWYA446EX14	Battery	
	15	PNWYA446EX15	Battery cover (Black color)	
	15	PNWYB446EX15	Battery cover (Grey color)	
	15	PNWYC446EX15	Battery cover (Wine Red color)	
	15	PNWYD446EX15	Battery cover (Red color)	
	16	PNWYA446EX16	Protective foil	

4 Change Information

No.	Main Revision Contents	Change of the Suffix Code	Issue
1.0	First version KX-TU446EXB, KX-TU446EXG, KX-TU446EXR and KX-TU446EX1.	-----	Jul, 2025